

350mm PRESTRESSED CONCRETE SLAB 09.1112-29 - SAFE LOAD TABLE								14/01/2024
Self Weight 669Kg/m - SAFE LOADS are exclusive of self weight (90mins fire resistance)								
EFFECTIVE SPAN (see fig A for explanation)		PRELIMINARY UNIFORM SAFE LOAD (0 infilled holes)	SHEAR 0 INFILLED HOLES	BEARING 0 INFILLED HOLES	PRELIMINARY UNIFORM SAFE LOAD (2 infilled holes)	SHEAR* 2 INFILLED HOLES	BEARING 2 INFILLED HOLES	9mm TOP WIRES
meters	feet	Kg/m ²	T/panel	mm	Kg/m ²	T/panel	mm	
3.0	9'10"	8,845	15.92	100	11,734	21.12	100	2
3.5	11'6"	7,481	15.71	100	9,957	20.91	100	2
4.0	13'1"	6,463	15.51	100	8,629	20.71	100	2
4.5	14'9"	5,670	15.31	100	7,531	20.51	100	2
5.0	16'5"	5,037	15.11	100	5,989	20.31	100	2
5.5	18'0"	4,518	14.91	100	4,847	20.11	100	2
6.0	19'8"	3,979	14.70	100	3,979	19.90	100	2
6.5	21'4"	3,304	14.50	100	3,304	19.70	100	2
7.0	23'0"	2,768	14.30	100	2,768	19.50	100	2
7.5	24'7"	2,335	14.10	100	2,335	19.30	100	2
8.0	26'3"	1,981	13.90	100	1,981	19.10	100	2
8.5	27'11"	1,688	13.70	100	1,688	18.90	100	2
9.0	29'6"	1,442	13.49	100	1,442	18.69	100	2
9.5	31'2"	1,234	13.29	100	1,234	18.49	100	2
10.0	32'10"	1,057	13.09	100	1,057	18.29	100	2
10.5	34'5"	904	12.89	100	904	18.09	100	2
11.0	36'0"	771	12.69	100	771	17.89	100	2
11.5	37'9"	656	12.48	100	656	17.68	100	2
12.0	39'4"	554	12.28	100	554	17.48	100	2
12.5	41'0"	465	12.08	100	465	17.28	105	2
13.0	42'8"	385	11.88	100	385	17.08	105	2
13.5	44'4"	315	11.68	100	315	16.88	110	2
14.0	45'11"	251	11.48	105	251	16.68	110	2
14.5	47'7"	182	11.27	105	182	16.47	110	2
15.0	49'3"	115	11.07	110	115	16.27	115	2

Notes to Periti: Refer also to guidelines: <http://www.gmfprecast.sandbox.local.com.mt/technical-specs>

- (A) Load tables conforming to *MSA EN 1992-1-1 Eurocode 2: Design of concrete structures - Part 1-1: General rules and rules for buildings*, with both the safe load values satisfying the serviceability limit state (SLS)
- (B) For HC slabs resting on beams, filling of hollows in C30 concrete at supports is recommended.
- (C) The minimum bearing of HC slabs as per table above is to be a minimum of 100mm depending on the loads & strength C30 of padstone suletta, important to have a fair-faced finish to the top surface.
- (D) For all load patterns, eg point loads, these are to be converted to equivalent uniform loads, whilst the **actual** shear load needs to be addressed.
- (E) The selection of *plank* type is the responsibility of the client's *Perit*.
- (F) Embodied carbon is measured per square meter on plan.

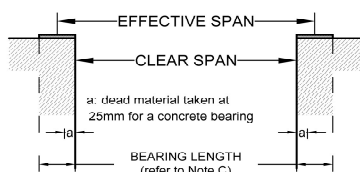


Fig. A

350

Concrete Grade: C45
 Area: 0.273m²
 Hole Area: 0.133m²
 Weight / m: 669kg/m
 R_w: 416mm
 I_{xx}: 374,249cm⁴
 Y_t: 180mm
 Y_b: 170mm
 Embodied Carbon: 119kgCO₂e/m²

